

Trade Aerial



Proposed Retail Development
Drive-thru Opportunities
Retail Pads available for Ground Lease or Build to Suit

Site Aerial

details

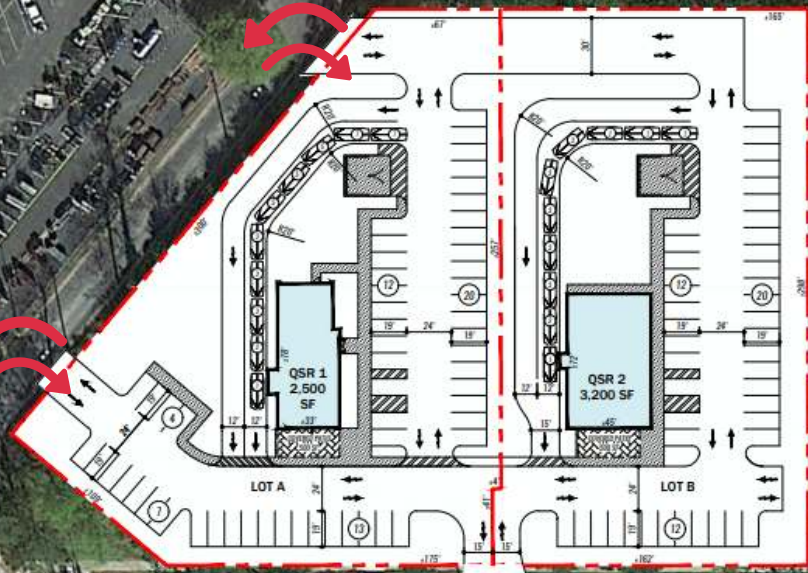
Proposed QSR pads available at lighted intersection of S. Walnut Street & SE 144th Avenue.
Full access and frontage on S. Walnut Street.
Located along SR 301, a major thoroughfare that connects Gainesville to Jacksonville.



Proposed Retail Development
Drive-thru Opportunities
Retail Pads available for Ground Lease or Build to Suit

 **Anthony V. Cervone**
tc@rightcoastre.com
O. 786.378.5876 | C. 305.773.4701

Site Plan



S Walnut Street (29,505 AADT)

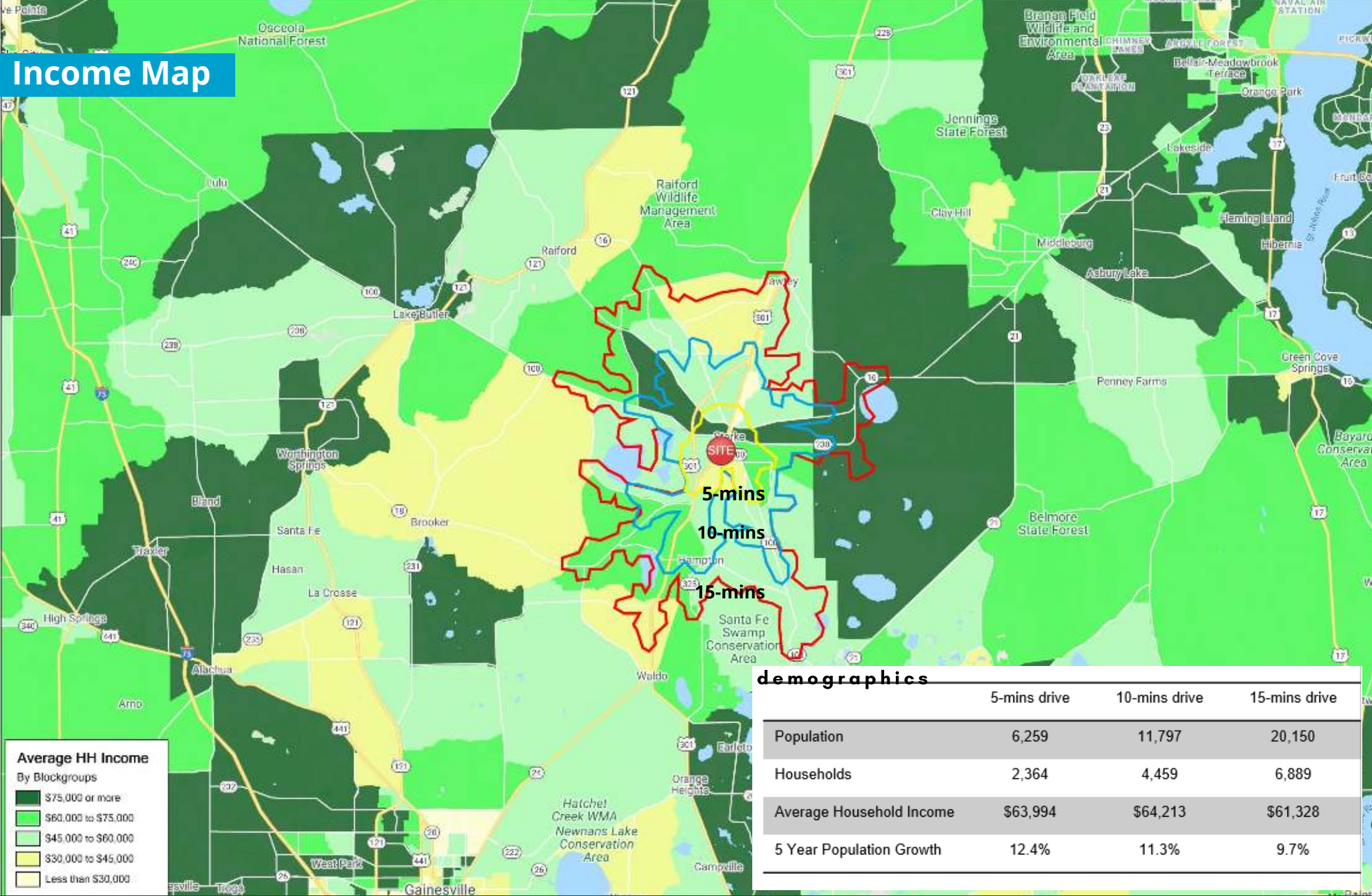
S WALNUT STREET



Proposed Retail Development
Drive-thru Opportunities
Retail Pads available for Ground Lease or Build to Suit

 **Anthony V. Cervone**
tc@rightcoastre.com
O. 786.378.5876 | C. 305.773.4701

Income Map



Average HH Income
By Blockgroups

- Dark Green: \$75,000 or more
- Medium Green: \$60,000 to \$75,000
- Light Green: \$45,000 to \$60,000
- Yellow: \$30,000 to \$45,000
- Light Yellow: Less than \$30,000

demographics

	5-mins drive	10-mins drive	15-mins drive
Population	6,259	11,797	20,150
Households	2,364	4,459	6,889
Average Household Income	\$63,994	\$64,213	\$61,328
5 Year Population Growth	12.4%	11.3%	9.7%

Proposed Retail Development
Drive-thru Opportunities
Retail Pads available for Ground Lease or Build to Suit

 **Anthony V. Cervone**
tc@rightcoastre.com
O. 786.378.5876 | C. 305.773.4701