



**Property Features:**

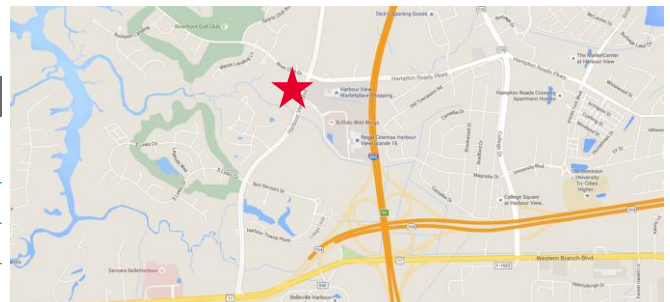
- 2,000 - 4,027 SF available
- Join Starbucks and Verizon
- Retail shops at the intersection of Harbour View Blvd and Harbour Towne Parkway
- Surrounded by strong office community – Bon Secour and Sentara hospitals, Joint Warfighting Center and Military Contractors
- High Average Household Income
- Mixed use development pending across the street
- Shares traffic signal with Harris Teeter / Regal Cinemas
- Immediately off I-664

**Nearby Retailers**



**Demographics**

	1 Mile	3 Miles	5 Miles	5 Minute Drive Time
Population	5,371	48,326	83,847	43,779
Avg. HH Income	\$117,274	\$82,360	\$85,343	\$79,438
Daytime Population	4,098	36,746	65,321	33,452



For more information, contact:

**DAVID MACHUPA**  
 First Vice President  
 757 213 4156  
[david.machupa@thalhimer.com](mailto:david.machupa@thalhimer.com)

**ED KIMPLE**  
 Senior Vice President  
 757 213 4155  
[ed.kimple@thalhimer.com](mailto:ed.kimple@thalhimer.com)

**CHRIS GOOD, CCIM**  
 Senior Associate  
 757 213 4159  
[chris.good@thalhimer.com](mailto:chris.good@thalhimer.com)

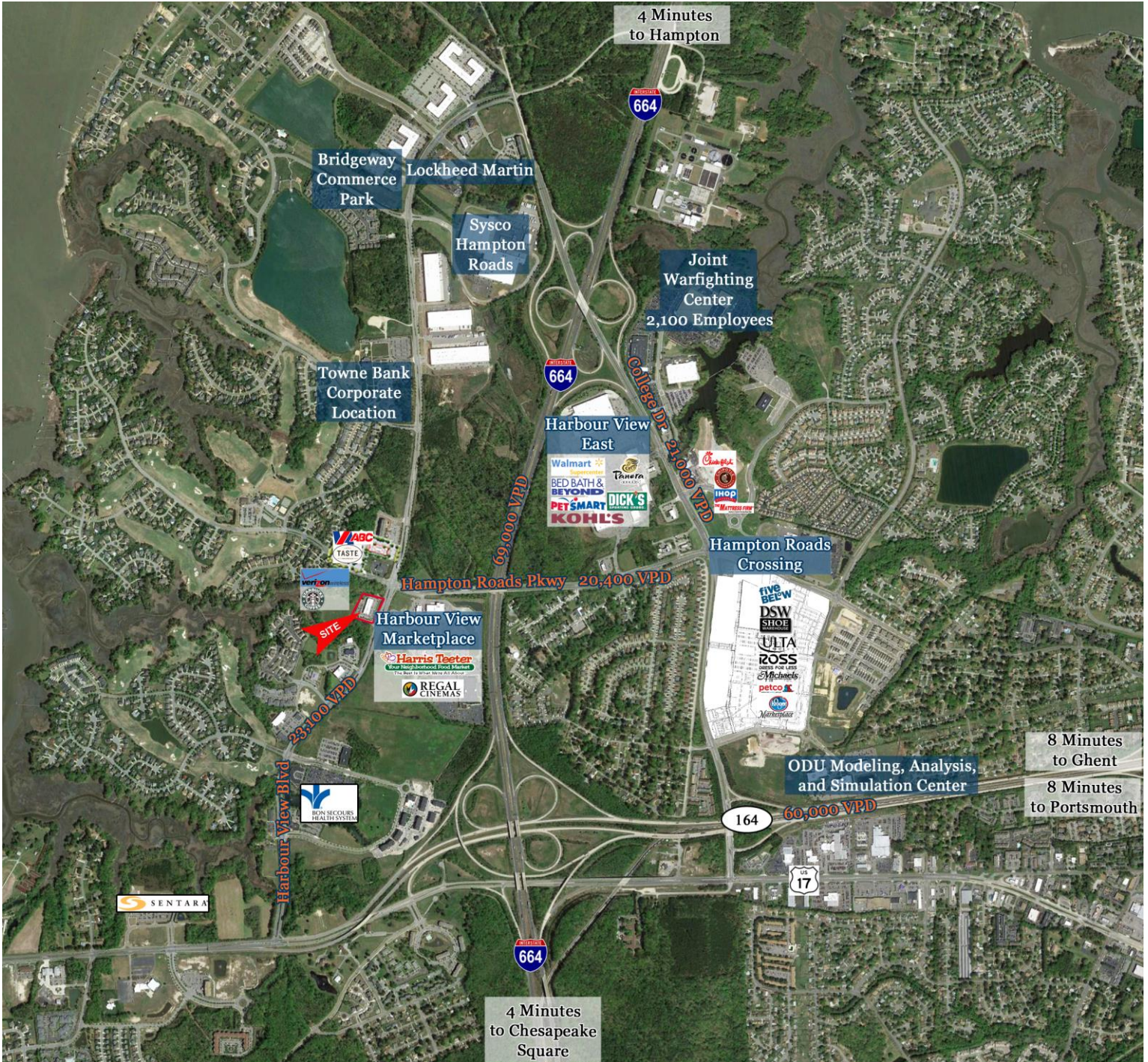
The Town Center of Virginia  
 Beach  
 222 Central Park Ave., Suite  
 1820  
 Virginia Beach, VA 23462  
[www.thalhimer.com](http://www.thalhimer.com)

Independently Owned and Operated / A Member of the Cushman & Wakefield Alliance

Cushman & Wakefield | Thalhimer © 2015. No warranty or representation, expressed or implied, is made to the accuracy or completeness of the information contained herein, and same is submitted subject to errors, omissions, change of price, rental or other conditions, withdrawal without notice, and to any special listing conditions imposed by the property owner(s). As applicable, we make no representation as to the condition of the property (or properties) in question.

**RETAIL FOR LEASE**  
**Harbour View Shoppes**

5883-5889 Harbour View Boulevard, Suffolk, VA



For more information, contact:

**DAVID MACHUPA**  
 First Vice President  
 757 213 4156  
[david.machupa@thalhimer.com](mailto:david.machupa@thalhimer.com)

**ED KIMPLE**  
 Senior Vice President  
 757 213 4155  
[ed.kimple@thalhimer.com](mailto:ed.kimple@thalhimer.com)

**CHRIS GOOD, CCIM**  
 Senior Associate  
 757 213 4159  
[chris.good@thalhimer.com](mailto:chris.good@thalhimer.com)

The Town Center of Virginia  
 Beach  
 222 Central Park Ave., Suite  
 1820  
 Virginia Beach, VA 23462  
[www.thalhimer.com](http://www.thalhimer.com)

Independently Owned and Operated / A Member of the Cushman & Wakefield Alliance

Cushman & Wakefield | Thalhimers © 2015. No warranty or representation, expressed or implied, is made to the accuracy or completeness of the information contained herein, and same is submitted subject to errors, omissions, change of price, rental or other conditions, withdrawal without notice, and to any special listing conditions imposed by the property owner(s). As applicable, we make no representation as to the condition of the property (or properties) in question.

**RETAIL FOR LEASE**  
**Harbour View Shoppes**

5883-5889 Harbour View Boulevard, Suffolk, VA



For more information, contact:

**DAVID MACHUPA**  
 First Vice President  
 757 213 4156  
[david.machupa@thalhimer.com](mailto:david.machupa@thalhimer.com)

**ED KIMPLE**  
 Senior Vice President  
 757 213 4155  
[ed.kimple@thalhimer.com](mailto:ed.kimple@thalhimer.com)

**CHRIS GOOD, CCIM**  
 Senior Associate  
 757 213 4159  
[chris.good@thalhimer.com](mailto:chris.good@thalhimer.com)

The Town Center of Virginia  
 Beach  
 222 Central Park Ave., Suite  
 1820  
 Virginia Beach, VA 23462  
[www.thalhimer.com](http://www.thalhimer.com)

Independently Owned and Operated / A Member of the Cushman & Wakefield Alliance

Cushman & Wakefield | Thalhimers © 2015. No warranty or representation, expressed or implied, is made to the accuracy or completeness of the information contained herein, and same is submitted subject to errors, omissions, change of price, rental or other conditions, withdrawal without notice, and to any special listing conditions imposed by the property owner(s). As applicable, we make no representation as to the condition of the property (or properties) in question.

